

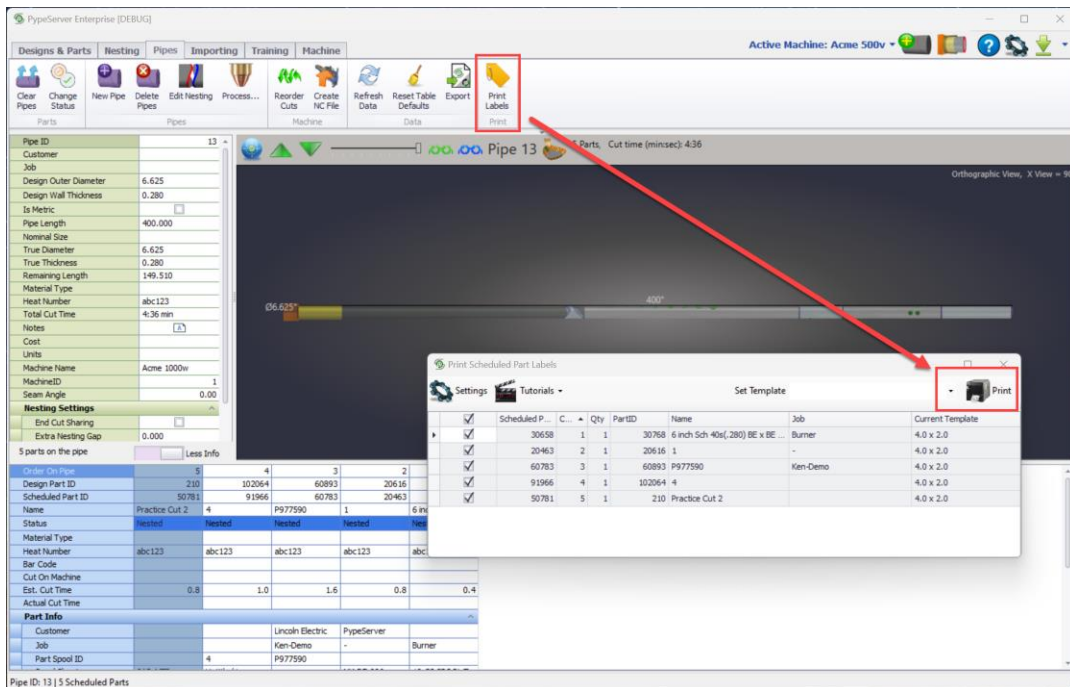


# Label Print User Guide

## Introduction

Label printing generates part labels with critical information in the form of text, barcodes, and QR codes, as well as logos and other features. These part-specific labels provide inventory tracking and links to design drawings and fabrication notes for use in the shop and in the field.

Labels are using the Print Labels button on the main ribbon. Label printing is also integrated into the workflow and labels can be printed automatically when parts are cut or scrapped.



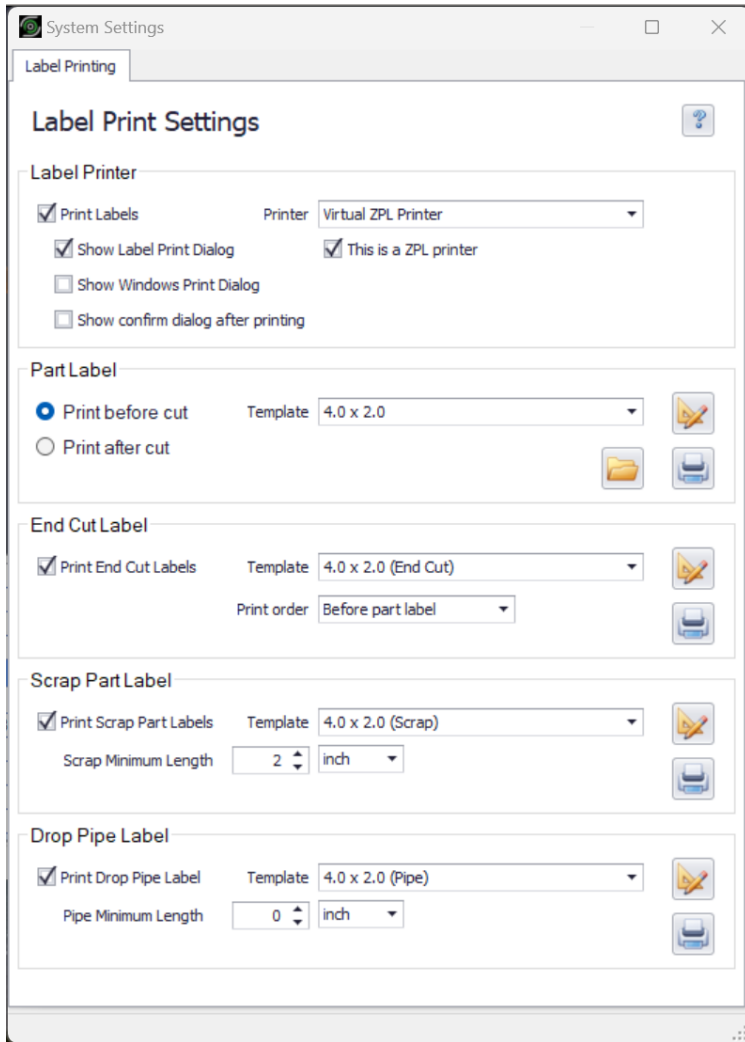
Print Labels button

## Print Settings

Label settings are available using either the “Label Print” dialog “Settings” button or the main window “System Settings” button and navigate to the “Label Printing” tab of the dialog.

Label Print settings are organized into 5 sections, 1 for the label printer and 1 for each label type.





Label Print Settings

## Label Printer

This section configures the label printer settings and enables/disables label printing. Common label settings will be shown once although they may be duplicated in other label settings.

### Print Labels

Sets all label printing on or off. When unchecked no labels of any type are printed.

### Printer

Selects which installed printer to use for all label printing.

### ZPL Printer checkbox

Many label printers support the Zebra Programming Language (ZPL). Check this when your label printer supports ZPL.



### Show Label Print Dialog

When checked, show the Label Print dialog before printing labels, allowing the operator to select a different printer or label template before printing labels.

### Show Windows Print Dialog

When checked, show the Windows Print dialog before printing labels, allowing the operator to select a different printer and configure printer settings before printing labels.

### Show confirm dialog

When checked, show a notification dialog after printing labels showing the number of labels printed.

## Part Label

Part Label settings and design.

### Print before cut

Prints label before cutting the part.

### Print after cut

Prints labels after cutting the part.

## Template

The label template to use when printing part labels.

### Design button

Edit the currently selected label print template.

### Test Print button

Print the currently selected label print template using test data.

### Templates folder button

Open a Windows Explorer window to the label templates folder.

This folder is normally located at PypeServer Documents\Label Printing\Templates

## End Cut Label

End Cut Label settings and design.

### Print End Cut Labels

When checked a label is printed for both end cuts of a part.

Used for marking end cut preparation and welding data for later fabrication in the workflow.

### Print order

Selects in what sequence to print end-cut labels.

- Before part label
  - Prints end-cut labels before printing the part label.



- After part label
  - Print the part label first, then the end cut labels.
- Before/after part label
  - Print the first end-cut label, then the part label, and then the second end-cut label.

## Scrap Part Label

Scrap Part Label settings and design.

### Print Scrap Part Labels

When checked, a label is printed when parts are marked as scrapped for defect part identification.

### Scrap Minimum Length

The minimum length of the scrap part before a scrap label will be printed.

Note: The length is converted as needed when the part is measured in units different than the set value.

## Drop Pipe Label

Drop Pipe Label settings and design.

### Print Drop Pipe Label

When checked, a label is printed when pipes with usable material are removed from the machine.

### Drop Minimum Length

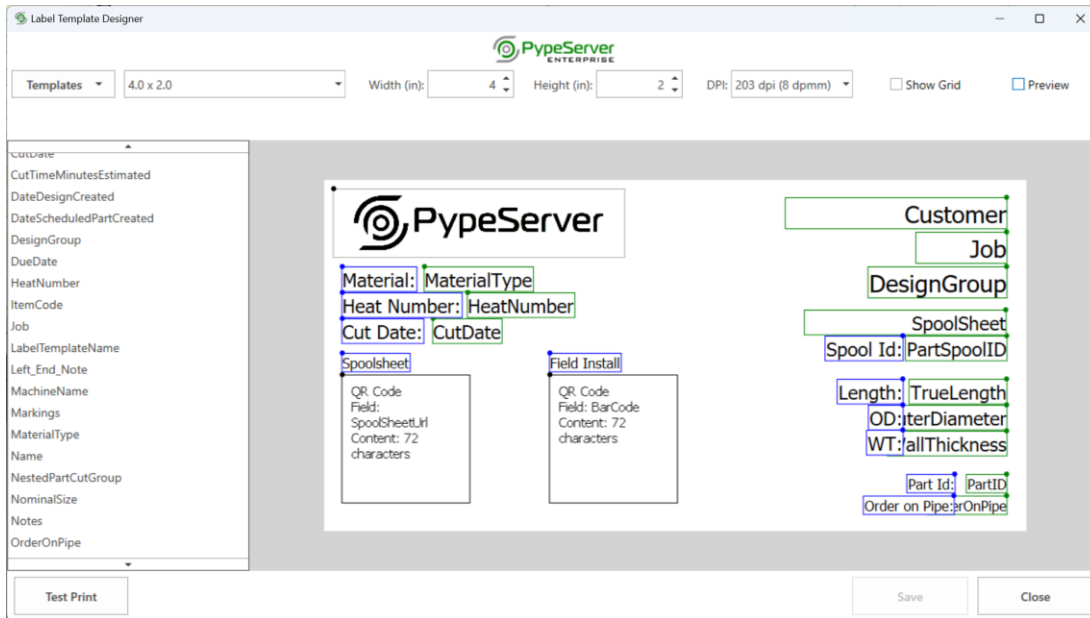
The minimum remaining length of the pipe before a drop pipe label is printed.

## Label Template Designer

PypeServer Label templates are edited and managed within the Label Templates Designer while NiceLabel templates are edited using the NiceLabel designer. NiceLabel designer documentation is available from Label Print help links while this section will review the Enterprise Label Designer.

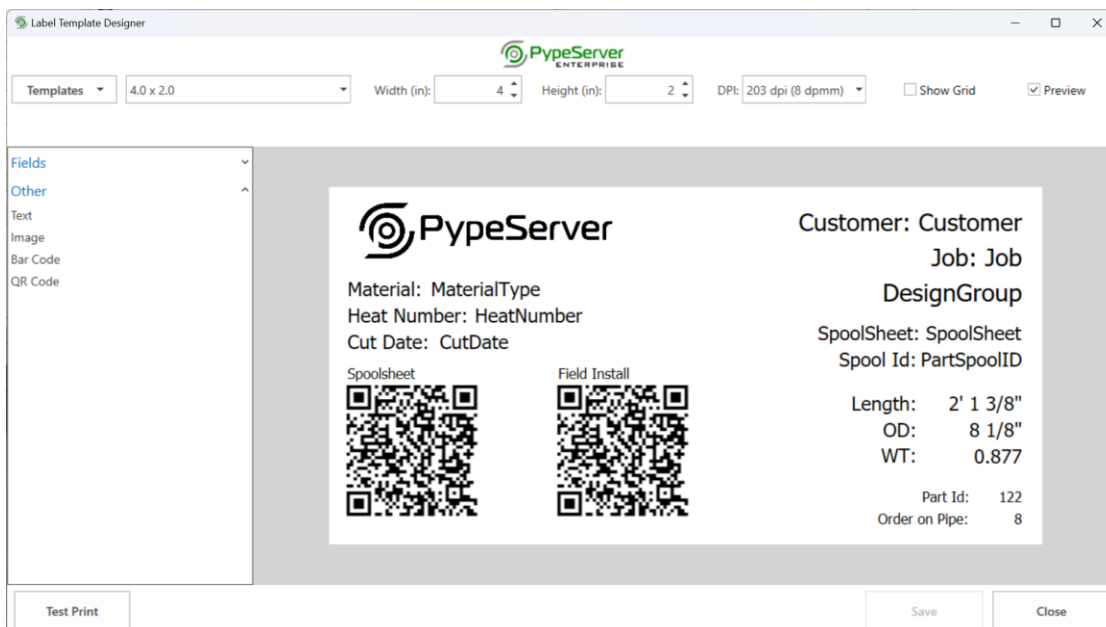
The Label Template Designer provides the design and management of PypeServer label templates. The designer sets the size, dots per inch, and layout of label templates. Fields and elements from the left are dragged onto the label canvas where size, position, alignment, and other variable attributes can be set.





Label Designer – Design Mode

- Controls, such as QR Codes and Bar Codes, can be set to display any data field in the Fields drop-down list.
- Local images can be added to the print templates, resized, and positioned.
- Static text fields can incorporate variable fields using custom formatting.
- Template edits can be previewed using sample data.
  - Check the Preview button to view in the editor.
  - Click the “Test Print” button to print a test label to the printer.



Label Designer – Preview Mode using sample data



		<b>Customer: Greenville School Dist</b> <b>Job: Gordon Elementary</b>	
<b>Material: Pipe Chicago A53 ERW Gr-B Std Wt Blk Std Pipe PE</b>		<b>CHWS</b>	
<b>Heat Number:</b>		<b>SpoolSheet: CHWS-002</b>	
<b>Cut Date:</b>		<b>Spool Id: 1</b>	
<b>Spoolsheet</b> 	<b>Field Install</b> 	<b>Length: 3' 0"</b> <b>OD: 6 5/8"</b> <b>WT: 0.280</b>	
		<b>Part Id: 133160</b> <b>Order on Pipe: 3</b>	

Printed Part Label

## Layout Elements

Label design requires creating a new template, configuring the template size and DPI settings, and then dragging label elements onto the label canvas and configuring the element settings.

The following sections describe the available layout elements and settings. Element positions and size are in dots. The printed size on the label is dependent on the label's Dots Per Inch (DPI) setting. Some element settings are described once and are duplicated across label settings.

## Fields

An element that displays data from a part field.

## Settings

Left: 115	Top: 100	Size: 22	<input type="checkbox"/> Align right	<input type="checkbox"/> Show field name	Format: None	0	MaterialType (Text)
-----------	----------	----------	--------------------------------------	--	--------------	---	---------------------

## Left/Right

The field start position measured in DPI from the left side of the label canvas.

Note: The start position for Right aligned fields is on the right side of the field.

## Top

The field start position measured in DPI from the top of the label canvas.

## Size

Text font size measured in DPI. Custom font types are not available.

## Align right

Align and right-justify the field contents starting at the dot specified in the "Right position" setting for this field.

## Show field name

Prefix the field contents with the field name and colon to use as a field label.



## Format

Optional formatting is available based on the field data type.

- Date/Time
  - Short date
  - Long date
  - Short time
  - Short date/time
  - Long date/time
- Number
  - Feet/Inches
  - Inches
  - Decimal
- Text
  - Truncate length

## Image

An element for an image or logo on this label.

### Settings

Left:	10	Top:	10	Width:	338	Height:	80	File:	\\PypeServer\PypeServer Documents\Label Printing\SupportFile	Browse:
-------	----	------	----	--------	-----	---------	----	-------	--	---------

## Width

The width of the image in dots (DPI).

## Height

The height of the image in dots (DPI).

## File

The image file location. Image file type can be PNG, JPG, or BMP.

## Bar Code

A Bar Code for a field on this label.

### Settings

Left:	560	Top:	260	Width:	200	Height:	120	Format:	Code128	Field:	BarCode	Sample Data:	123456789012
-------	-----	------	-----	--------	-----	---------	-----	---------	---------	--------	---------	--------------	--------------

## Format

The Bar Code format of the field data. Note that the length and type of data allowed varies with the bar code format. Use the preview checkbox to see if the sample data is correct for the selected bar code type.

## Field

The Part field used to populate the QR Code.



## Sample Data

Sample data to use for preview and print testing.

## Supported Formats

- Codabar
- Code11
- Code39
- Code93
- Code128
- CodeMSI
- DataBar
- DataMatrix
- EAN8
- EAN13
- Industrial2of5
- ITF14
- Matrix2of5
- PDF417
- PostNet
- UPCA
- UPCE0
- UPCE1

## QR Code

An element for a QR Code on the this label.

Note: QR Codes support up to 3000 characters at different element or module sizes. A QR Code can have different sizes depending on the scale setting and number of characters in the field data. Consider leaving enough white space round the QR Code element in the label layout to accommodate different field data lengths.

## Settings

Left:	20	Top:	225	Scale:	3	Field:	SpoolSheetUrl	Sample Data:	<a href="https://portal.pypeserver.com/cut-parts/?ui">https://portal.pypeserver.com/cut-parts/?ui</a>
-------	----	------	-----	--------	---	--------	---------------	--------------	---


## Scale

QR Code module size scaled to the ZPL supported sizes 1-10.

## Text

An element with static or formatted text on this label.

## Settings

Left:	20	Top:	100	Size:	22	<input type="checkbox"/> Align right:	Text:	Material:	
-------	----	------	-----	-------	----	---------------------------------------	-------	-----------	---





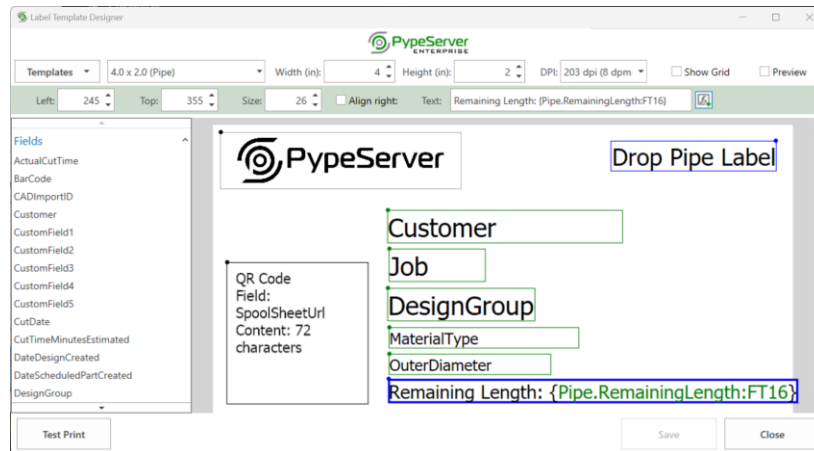
## Text

The text to display on the printed label. Can contain custom formatting generated using the Custom Format button.

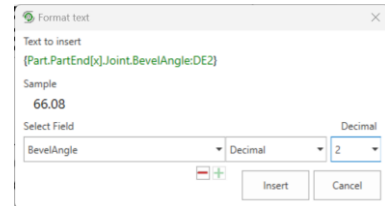
## Format button

Shows the Format Text dialog allowing the designer to include formatted hierarchal part data in a text element.

Note: Creating custom formatted text is an advanced subject. Please contact PypeServer for training.



Text element with formatted field data



Format text dialog

